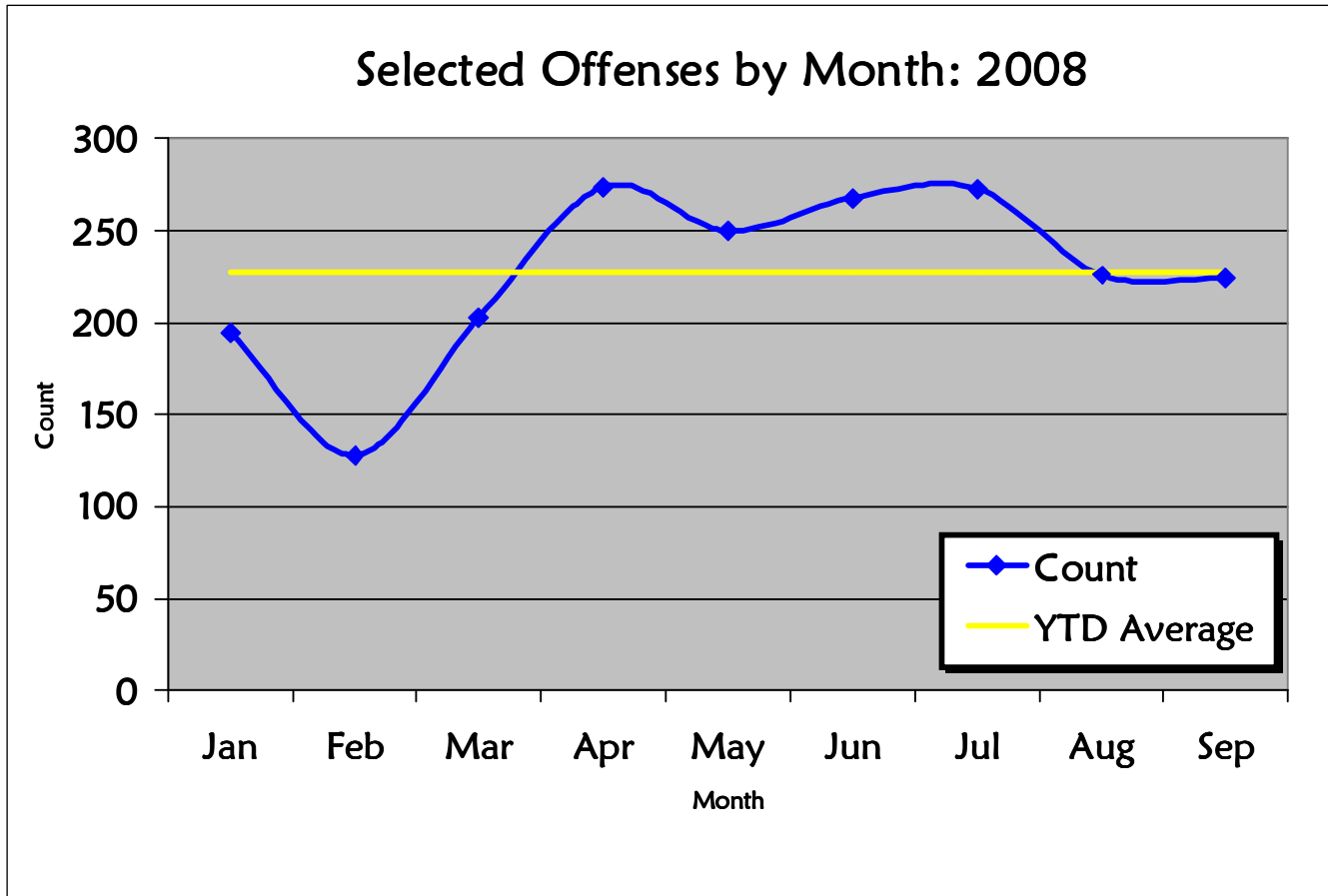




Fitchburg, MA Police Department Selected Offenses by Month: 2008

Selected Offense Type	Jan	Feb	Mar	Apr	May	Jun	July	Aug	Sep
Murder	0	1	0	2	0	0	1	0	0
Robbery	1	3	8	8	3	6	1	4	11
Aggravated Assault	21	9	18	28	25	15	29	10	23
Simple Assault	30	26	42	49	36	40	41	36	54
Burglary	29	10	25	40	41	31	35	41	28
Vandalism	43	35	61	80	78	78	83	74	64
Auto Theft	17	5	10	10	10	10	6	11	7
Thefts from Autos/Parts	35	20	16	28	23	55	52	24	14
All Other Larceny	19	19	23	29	34	33	25	26	23
Monthly Totals	195	128	203	274	250	268	273	226	224



The above line chart depicts those selected reported offenses by month as shown in the Table on page 1. As you can see, the number of offenses increased during the 2nd and 3rd quarters of this year. The level of crime tends to increase with warmer weather. Also included (as shown by the yellow line) is the arithmetic mean (the average) of the number of crimes by month. Although reported crime surpassed the monthly average from April through July, it appears to be declining.