

RECYCLE/RECICLE

THANK YOU FOR RECYCLING THESE:

GRACIAS POR RECICLAR ESTOS:

Cans Latas



Food and Beverage Cans

empty and rinse
vacíe y enjuague

Glass Vidrio



Bottles and Jars

empty and rinse
vacíe y enjuague

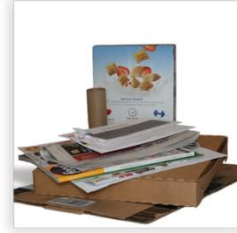
Plastic Containers Contenedores de Plástico



Kitchen, Laundry, Bath

empty and replace cap
vacíe y reemplaze la tapa

Paper & Cardboard Papel y Cartón



Mixed Paper, Newspaper, Magazines, Cardboard

emptied and flattened
vacíe y aplaste

NO!



Do Not Bag Recyclables
No Garbage
No coloque artículos reciclables dentro de bolsas.



No Plastic Bags or Plastic Wrap
No tire bolsas plásticas o envoltura plástica



No Food or Liquid
No tire comida, ni líquidos



No Clothing or Linens
No tire ropa, ni sábanas



No Tanglers (no hoses, wires, chains, or electronics)
No tire objetos que se puedan enredar

NO PLASTIC BAGS IN THE RECYCLING CART



DO NOT BAG Recyclables

Collecting recyclables in a bag? Empty the contents into the cart.



Return plastic bags to retailers.

Fitchburg Health Department
(978) 829-1870

[www.ci.fitchburg.ma.us/
222/Rubbish-Recycling](http://www.ci.fitchburg.ma.us/222/Rubbish-Recycling)

Thank you for recycling.  Funded in part by MassDEP. Min. 30% recycled paper.